

# • ∞ SET LUNCH MENU ∞ •

Monday to Friday, 12pm - 5pm

1 COURSE £12.99 | 2 COURSE £15.99 | 3 COURSE £18.99

## STARTERS

Soup of the day, crusty bread (V) (V\*)

Sticky teriyaki chicken, sping onion & chilli

Toasted rosemary bread with aioli (V)

## MAINS

Cumberland sausage & mash, seasonal greens, onion gravy  
Veggie sausage available (V)

Scampi 'n' chips, peas, tartare sauce

Hand carved ham, egg & chips

Goan vegetable curry, basmati rice (VE)

Souvlaki chicken salad, crumbled feta, chimichurri,  
cucumber, pomegranate, garlic yoghurt, pink onions

## DESSERTS

White & dark chocolate mousse, raspberry sauce & crumbled flake (V)

2 scoops of Marshfield Farm ice cream (V) or sorbet (VE)  
Clotted cream vanilla | Chocoholic heaven | Succulent strawberry  
Salted caramel | Apple | Raspberry

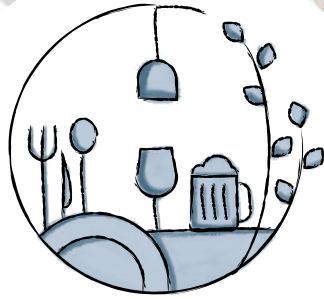
Mini chocolate brownie with choice of hot drink (V)  
Americano | Espresso | Cappucino | Latte | Flat White  
Macchiato | Mocha | Hot Chocolate | Tea

(V) Vegetarian (VE) Vegan (V\*) Vegan option available



All dishes are prepared in areas where cross contamination may occur. Menu descriptions aren't guaranteed to include all ingredients. Please advise if you have any allergies/intolerances before ordering. Scan QR to view allergens.

A discretionary 12.5% service charge will be added to your bill and fairly distributed amongst the team who prepared and served your meal and drinks



SET LUNCH